

## **LAMPIRAN**

## Peralatan



## Pengukuran SDI dan PCI



STA 0+000 – 0+100



STA 0+100 – 0+200



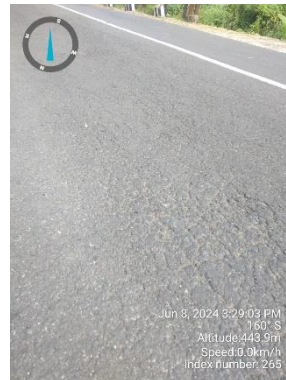
STA 0+200 – 0+300



STA 0+300 – 0+400



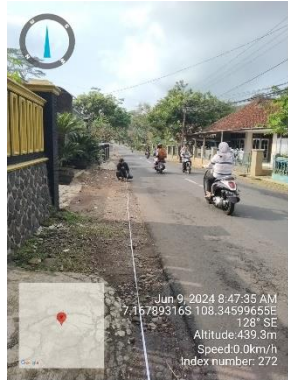
STA 0+400 – 0+500



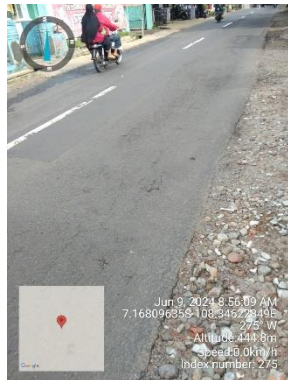
STA 0+500 – 0+600



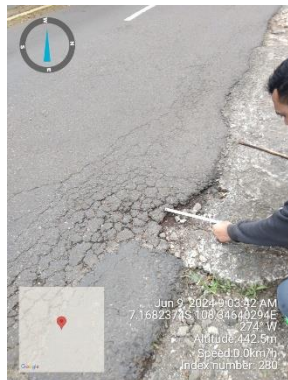
STA 0+600 – 0+700



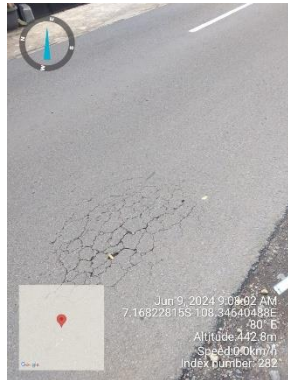
STA 0+700 – 0+800



STA 0+800 – 0+900



STA 0+900 – 1+000



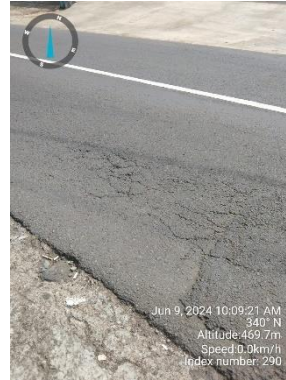
STA 1+000 – 1+100



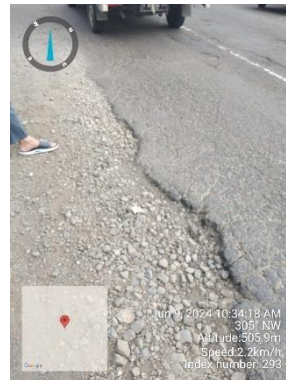
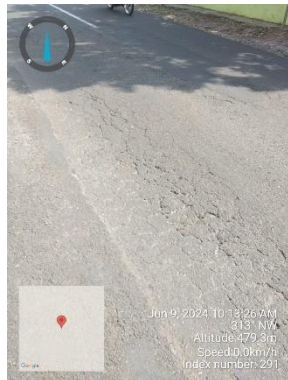
STA 1+100 – 1+200



STA 1+200 – 1+300



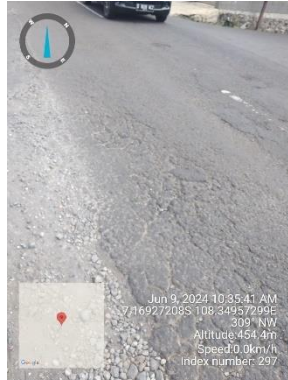
STA 1+300 – 1+400



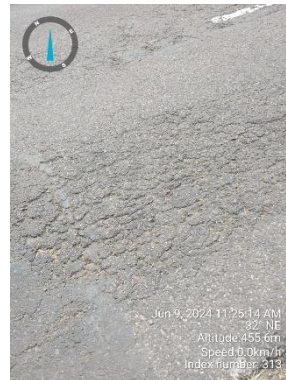
STA 1+400 – 1+500



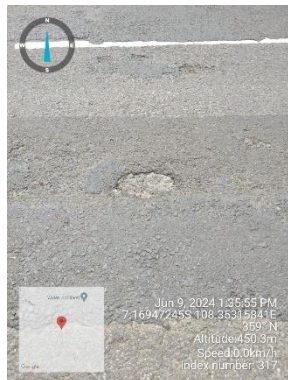
STA 1+500 – 1+600



STA 1+600 – 1+700



STA 1+700 – 1+800





STA 1+800 – 1+900



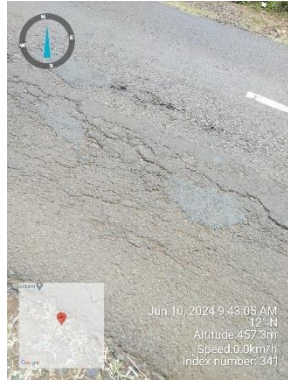
STA 1+900 – 2+000



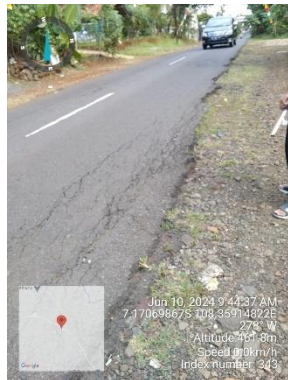
STA 2+000 – 2+100



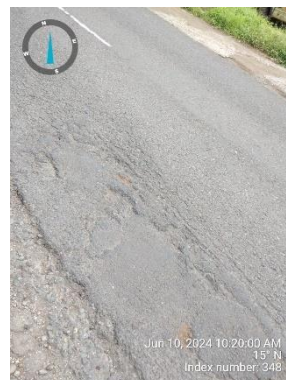
STA 2+100 – 2+200



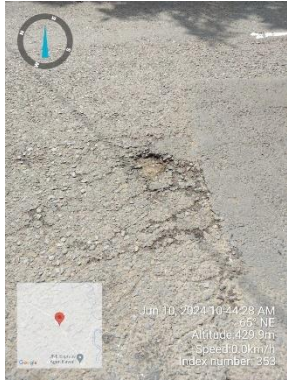
STA 2+200 – 2+300



STA 2+300 – 2+400



STA 2+400 – 2+500



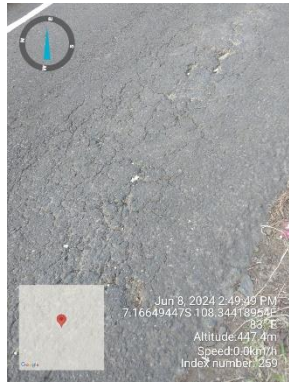
STA 2+500 – 2+600



STA 2+600 – 2+700



STA 2+700 – 2+800



STA 2+800 – 2+900



STA 2+900 – 3+000

